

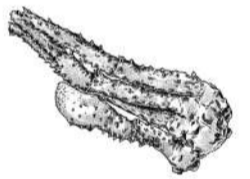


Shabu Shabu



# HANASUKI

Shabu Shabu Restaurant



* Kurobuta Pork Belly	* A4 Munakata Chuck Roll	* Seafood & Kurobuta Pork Belly	* A5 Kagoshima Wagyu Chuck Roll	* A5 Kagoshima Wagyu Sirloin	✿ Recommended Add Ons ✿
\$70.90 Serving 1 person	\$104.90 Serving 1 person	\$89.90 Serving 1 person	\$120.90 Serving 1 person	\$169.90 Serving 1 person	<b>Sashimi</b>
Appetizer	Appetizer	Appetizer	Appetizer	Appetizer	Tsubugai Shellfish \$15.90
Assorted Seasonal Vegetables	Assorted Seasonal Vegetables	Assorted Seasonal Vegetables	Assorted Seasonal Vegetables	Assorted Seasonal Vegetables	Amaebi Sweet Prawns \$21.90
Kurobuta Pork Belly	A4 Munakata Chuck Roll	Seafood & Kurobuta Pork Belly	A5 Kagoshima Wagyu Chuck Roll	A5 Kagoshima Wagyu Sirloin	Assorted Sashimi \$29.90 2ppl / \$64.90 4ppl
Zousui	Zousui	Zousui	Zousui	Zousui	<b>A La Carte</b>
Japanese congee made using the seasoned remaining broth	Japanese congee made using the seasoned remaining broth	Japanese congee made using the seasoned remaining broth	Japanese congee made using the seasoned remaining broth	Japanese congee made using the seasoned remaining broth	King Crab \$140
					Premium Ox Tongue \$55.90
					Japanese Wagyu Tasting Plate \$62.90
					<b>Kanmi (Dessert)</b>
					Yuzu Sorbet \$9.90
					Anin Tofu \$9.90

All credit cards incur a surcharge. Our menu contains allergens and is prepared in a kitchen that handles nuts, shellfish, gluten. Whilst all reasonable efforts are taken to accommodate guest dietary needs, we cannot guarantee that our food will be allergen free. Please let any of our staff members know if you have any dietary requirements. Please note, a surcharge of 10% will apply on Sundays, and on public holidays. Groups of 8 or more will also incur a 10% service charge.

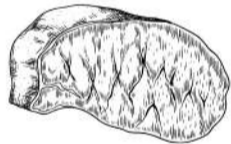


Please see our iPad menu for other delicious add ons



Sample Only

Sukiyaki



# HANASUKI

Shabu Shabu Restaurant



❁	❁	❁	❁	❁ Recommended ❁ Add Ons
<b>Kurobuta Pork Belly</b>	<b>A4 Munakata Chuck Roll</b>	<b>A5 Kagoshima Wagyu Chuck Roll</b>	<b>A5 Kagoshima Wagyu Sirloin</b>	<b>Sashimi</b>
\$70.90 Serving 1 person	\$104.90 Serving 1 person	\$120.90 Serving 1 person	\$169.90 Serving 1 person	Tsubugai Shellfish \$15.90 Amaebi Sweet Prawns \$21.90 Assorted Sashimi \$29.90 2ppl / \$64.90 4ppl
Appetizer	Appetizer	Appetizer	Appetizer	<b>A La Carte</b>
				Premium Ox Tongue \$55.90 Japanese Wagyu Tasting Plate \$62.90
Assorted Seasonal Vegetables	Assorted Seasonal Vegetables	Assorted Seasonal Vegetables	Assorted Seasonal Vegetables	<b>Kanmi (Dessert)</b>
Kurobuta Pork Belly	A4 Munakata Chuck Roll	A5 Kagoshima Wagyu Chuck Roll	A5 Kagoshima Wagyu Sirloin	Yuzu Sorbet \$9.90 Anin Tofu \$9.90
Seasoned Omlette Served over Rice	Seasoned Omlette Served over Rice	Seasoned Omlette Served over Rice	Seasoned Omlette Served over Rice	

All credit cards incur a surcharge. Our menu contains allergens and is prepared in a kitchen that handles nuts, shellfish, gluten. Whilst all reasonable efforts are taken to accommodate guest dietary needs, we cannot guarantee that our food will be allergen free. Please let any of our staff members know if you have any dietary requirements. Please note, a surcharge of 10% will apply on Sundays, and on public holidays. Groups of 8 or more will also incur a 10% service charge.



Please see our iPad menu for other delicious add ons